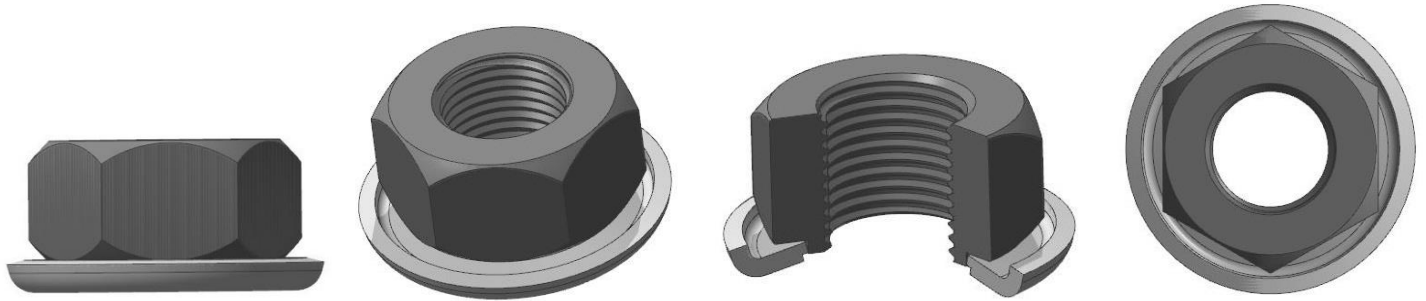


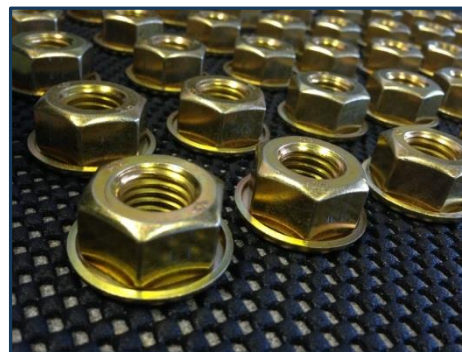
The logo for Innovative Manufacturing Engineering (IME) features the letters 'I', 'M', and 'E' in a stylized font. The 'I' is red, and the 'M' and 'E' are blue. The letters are set against a background of blue and black 3D rectangular blocks.

Innovative Manufacturing Engineering

32711 Glendale Ave. Livonia MI 48150-1611 734-466-8750 imedetroit.com



- A PRECISE **LOAD MATCHED BELLVILLE WASHER WITH FASTENER**
- HIGHLY **ACCURATE JOINT TENSION REGARDLESS OF FASTENER LUBRICITY**
- THICKNESS & SHAPE ARE DEVELOPED TO **PROVIDE PRECISE CLAMP LOAD**
- TIGHTEN TO FLATTEN THE WASHER AND FOR **ASSURED JOINT TENSION**
- SOFT RADIUS CONTACT EDGE FOR **MINIMAL COATING DISRUPTION**
- EXCELLENT FOR **USE ON ALUMINUM TO AVOID GALVANIC CORROSION**
- SUPERIOR **RESISTANCE TO VIBRATION LOOSENING IN SEVERE ENVIRONMENTS**
- EFFECTIVE **RESISTANCE TO EXTREME THERMAL CYCLING EFFECTS**
- SIMPLIFIED ASSEMBLY **CALIBRATED TORQUE WRENCH IS NOT REQUIRED**
- PROVEN TO **REDUCE ASSEMBLY TIME AND ELIMINATE ASSEMBLY ERRORS**



VOSB

ITAR Compliant

NIST SP800-171 Compliant

Cage Code : 7GQY1